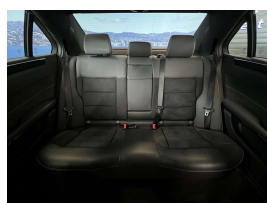
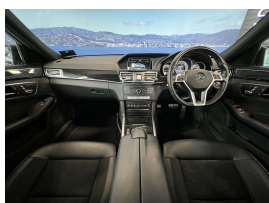
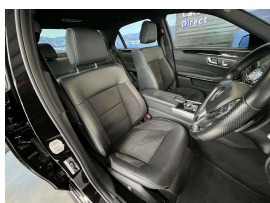
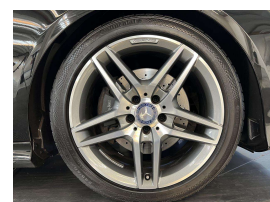
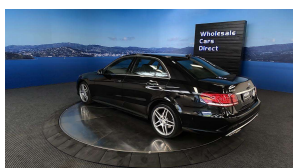




Wholesale Cars Direct

## 2015 Mercedes-Benz E 250 Avantgarde - Grade 4.5. \$23,990



|                     |           |
|---------------------|-----------|
| <b>Stock ID</b>     | 16387     |
| <b>Engine</b>       | 2000 cc   |
| <b>Body</b>         | Sedan     |
| <b>Odometer</b>     | 52,980 km |
| <b>Interior</b>     | 0         |
| <b>Transmission</b> | Automatic |

Welcome to Wholesale Cars Direct.  
WCD is quality, WCD is service, it is who we are.

This is such a special AMG sort package we cant write to much due to the feature list. Features include 360 degree camera, Partial leather trim, Heated front seats, Bluetooth handsfree, Reverse Camera, Autonomous cruise control plus (Distronic plus), Active park assist, Active blind assist, Active lane keep assist, Driving package, Rear end collision warning, Distronic plus cross support, Expanded brake assist (BAS+) Brake assist plus cross traffic (BAS+Q) Autonomous brake intervention warning for pedestrian, Memory package driver seats Collision minimization brake intervention, AMG styling package - front bumper, side skirt, Parking package, Pedestrian protection, 11 x SRS airbags, Parking Sensors,



**Stu Farrington**  
Vehicle Consultant  
0800 22 44 02  
021 622 203  
stu@wcd.co.nz



**AJ Hoare**  
Vehicle Consultant  
0800 22 44 02  
021 784 687  
aj@wcd.co.nz



**Scotty Duncan**  
For Finance  
+ Vehicle Consultant  
0800 22 44 02 EXTN 2  
022 071 2299  
scott@wcd.co.nz