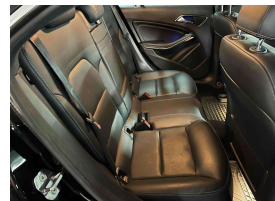
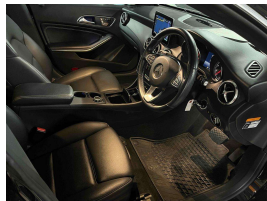
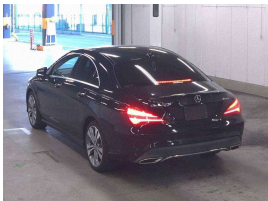




Wholesale Cars Direct

2019 Mercedes-Benz CLA 220 4Matic Premium Pack - Leather - Grade



Buy Safe tip: You do not need to be a mechanic to Buy Safe.

1. We have a 10-point checklist that we use to inspect every vehicle we sell. This checklist covers everything from the engine to the brakes, and from the exterior to the interior. We also have a 10-point checklist for the paperwork, including the title, registration, and insurance. We only sell vehicles that pass both checklists.

2. We have a 30-day money-back guarantee. If you are not satisfied with your purchase for any reason, we will refund your money. No questions asked.

3. We have a 1-year/100,000 km warranty. This warranty covers the engine, transmission, and drivetrain. It also covers the power windows, power locks, and power mirrors. We also have a 3-year/50,000 km warranty for the Mercedes-Benz brand.

4. We have a 24-hour roadside assistance service. If you have any problems with your vehicle, we will send a technician to your location to fix the problem. We also have a 24-hour towing service. If you need to tow your vehicle, we will send a tow truck to your location.

5. We have a fleet of vehicles that are all under 5 years old. This means that you are getting a relatively new vehicle at a great price. We also have a fleet of vehicles that are all under 100,000 km. This means that you are getting a vehicle that has been driven for a relatively short time.

6. We have a fleet of vehicles that are all in excellent condition. We only sell vehicles that are in excellent condition. We also have a fleet of vehicles that are all in excellent condition. We only sell vehicles that are in excellent condition.

7. We have a fleet of vehicles that are all in excellent condition. We only sell vehicles that are in excellent condition. We also have a fleet of vehicles that are all in excellent condition. We only sell vehicles that are in excellent condition.

8. We have a fleet of vehicles that are all in excellent condition. We only sell vehicles that are in excellent condition. We also have a fleet of vehicles that are all in excellent condition. We only sell vehicles that are in excellent condition.

9. We have a fleet of vehicles that are all in excellent condition. We only sell vehicles that are in excellent condition. We also have a fleet of vehicles that are all in excellent condition. We only sell vehicles that are in excellent condition.

10. We have a fleet of vehicles that are all in excellent condition. We only sell vehicles that are in excellent condition. We also have a fleet of vehicles that are all in excellent condition. We only sell vehicles that are in excellent condition.

Stock ID 16554

Engine 2000 cc

Body Sedan

Odometer 36,130 km

Interior Leather

Transmission Automatic

Welcome to Wholesale Cars Direct.
WCD is quality, WCD is service, it is who we are.



Stu Farrington
Vehicle Consultant
0800 22 44 02
021 622 203
stu@wcd.co.nz



AJ Hoare
Vehicle Consultant
0800 22 44 02
021 784 687
aj@wcd.co.nz



Scotty Duncan
For Finance
+ Vehicle Consultant
0800 22 44 02 EXTN 2
022 071 2299
scott@wcd.co.nz